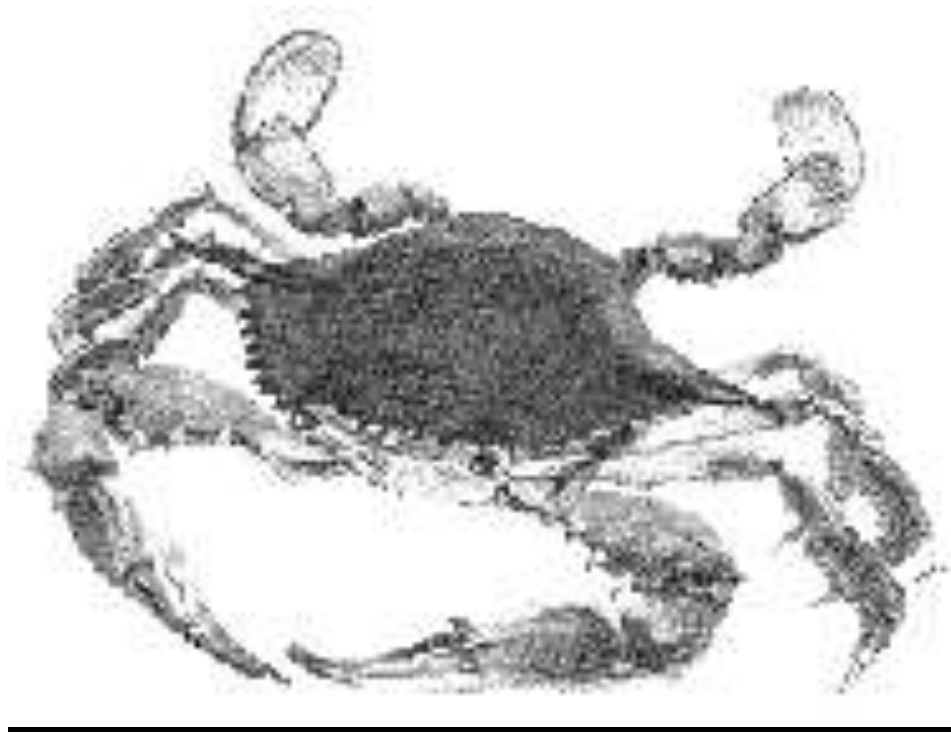


The Fleet & Family Support Center Relocation Guide to Naval Air Station Patuxent River, Maryland



**RELOCATION
ASSISTANCE
PROGRAM**



Moving Made Easy

TABLE OF CONTENTS

Pax River & Local Community Phone Numbers Quick List	3
Internet Addresses	5
Military One Source/ Welcome to Pax & Your Sponsor	6
Directions & Transportation	7
TRICARE & Naval Health Clinic	8
Station Regulations	9
Personal Property Office	10
Child Development Center	11
Schools	12
Adult Education & College Information	14
Bachelor Quarters Assignment Policies	15
Housing Service Center	16
Application for Assignment to Housing	17
Courtesy Move Household Goods Entitlement	18
Sex Offender Policy Acknowledgement	19
Housing Applicant Statement of Understanding	20
Basic Allowance for Housing (As of 1/15)	21
Chapel	22
MWR Activities	23
Spouse Employment Assistance Program	24
Employment Websites (Fed, Local, Other)	25

NAS & COMMUNITY PHONE NUMBERS

QUICK REFERENCE

CHAMBER OF COMMERCEs and AREA INFO

Calvert County Chamber of Commerce	410-535-2577
Charles County Chamber of Commerce	301-932-6500
St. Mary's County Chamber of Commerce	301-737-3001
Tri-County Council for Southern Maryland	301-274-1922

CHILD CARE

Child Care Administration	301-475-3770
Child Development Center, NAS	301-342-8988
Southern Maryland Child Care Resource Center	301-290-0040

DEPARTMENT OF MOTOR VEHICLES

Department of Motor Vehicles – Loveville St Mary's County (Full service)	800-950-1682
Department of Motor Vehicles - Driver's Test (By Appointment Only)	888-212-4709
Department of Motor Vehicles – Prince Frederick Calvert Cty (Mon-Weds Only)	800-950-1682
Department of Motor Vehicles – Waldorf Charles County (Full service)	800-950-1682

EDUCATION

Calvert County Public Schools	410-535-1700
Charles County Public Schools	301-934-7221
St. Mary's County Public Schools	301-475-5511 x7
Navy College Office	301-757-4111
St. Mary's College	240-895-2000
College of Southern Maryland/ Calvert County (Prince Frederick)	443-550-6000
College of Southern Maryland/ Charles County (La Plata)	301-934-7765
College of Southern Maryland/ St. Mary's County (Leonardtwn)	240-725-5300
Southern Maryland Higher Education Center	301-737-2500

HOUSING

Housing Service Center	301-342-3846
Lincoln Military Housing 240-895-0380
Housing – Maintenance – “Lincoln at Your Service” 888-578-4141
Southern Maryland Association of Realtors	301-274-4406/ 888-340-8727

MEDICAL

Calvert Memorial Hospital Public Relations - Calvert County	410-535-8212
Univ of Maryland Medical Center Public Relations - Charles County	301-609-4394
Naval Medical Clinic – Appointment Line	301-342-1506
Naval Medical Clinic - Information Desk	301-342-1418
Naval Medical Clinic - Health Benefits Advisor	301-995-4980
St. Mary's Hospital Public Relations - St. Mary's County	301-475-6010
TRICARE Information and Appointments	877-874-2273
<u>Medical Emergency</u> (On & Off Base)	911

NAS, PATUXENT RIVER

Base Pass, ID, & Vehicle Registration	301-342-3231/301-757-1770
Chaplain	301-342-3812
Child Development Center	301-342-3636/8988
Bachelor Quarters (BQ)	301-995-2754/CDO after hrs
Child Development Center Annex	301-342-3636
Command Duty Office (CDO)	301-342-1095

NAS, PATUXENT RIVER, cont.

Family Employment Readiness Program (FFSC/FERP)	301-342-4911
Housing Service Center	301-342-3846
Morale, Welfare and Recreation (MWR)	301-342-3510
Information Operator	301-342-3000
Naval Health Clinic - Information Desk	301-342-1418
Nurse Advice Line (24/7)	1-800-TRI-CARE (874-2273)Opt. #1
Navy Commissary	301-342-3789
Navy Exchange	301-342-0614
Fleet and Family Support Center (FFSC)	301-342-4911
Navy Gateway Inn & Suites (VOQ)	1-877-NAVY-BED
Navy Lodge	301-737-2400/ 800-NAVYINN
Navy-Marine Corps Relief Society	301-342-4739
Navy Recreation Center, Solomons/Lodging	410-326-7302/7301
Personal Property - Receptionist	301-757-9666
Personal Property - Inbound Counselor	1-888-271-7950
Police	301-342-3208/911
Public Affairs Office, NAS (PAO)	301-757-6748
Red Cross	24/7 Armed Forces Svc Ctr 1-877-272-7337
Transportation - Dispatcher	301-342-5088

NOTE: THE DSN PREFIXES FOR PATUXENT RIVER ARE 342, 757 & 995.

RECREATION

Calvert County Parks and Recreation	410-535-1600 x2225
Charles County Recreational Services	301-934-9305 x5152
Navy Recreational Center, Solomons	410-326-7302
St. Mary's Co. Dept. of Recreation and Parks	301-475-4200 x1801

SERVICE ORGANIZATIONS

Boy Scouts of America	301-530-9360
Girl Scouts	800-834-1702

TAXES

Calvert County Treasurer's Office	410-535-1600 x2272
Charles County Treasurer's Office	301-645-0685
Maryland State Income Tax	800-638-2937
St. Mary's County Treasurer's Office (Real Estate taxes)	301-475-4472/4473

TRANSPORTATION

NAS Transportation – Dispatcher	301-342-5088
St. Mary's Transit System	301-863-8400 X-1120
Tri-County Council for Southern Maryland/Regional Rideshare	301-274-1922

UTILITIES

Verizon	1-800-VERIZON
Cable: 1-800-COMCAST (Calvert); 301-645-9300 (Charles); 1-800-633-8578 (St. Mary's)	
Calvert County Water and Sewerage Division	410-535-1600 x2329
Charles County Government Water and Sewer	301-645-0624
St. Mary's Metropolitan Commission (water/sewer)	301-373-4733
Southern Maryland Electric Cooperative	888-440-3311

INTERNET ADDRESSES

General Information	
America's Job Bank	http://www.ajb.dni.us
Armed Forces Information	http://www.military.com
Bureau of Naval Personnel	http://www.public.navy.mil/bupers-npc/organization/BUPERS/Pages/default.aspx
CNIC Headquarters Webpage	http://www.cnic.navy.mil/
Defense Finances & Accounting Service	http://www.dfas.mil/
Department of Veterans Affairs	http://www.va.gov
DOD Publications/Directives	http://www.defense.gov/pubs
Government Jobs	http://www.usajobs.gov/ or www.opm.gov
Home Buying, Renting, Moving Tips+++	https://www.homes.mil/ / or http://www.move.mil
Housing	http://www.cnic.navy.mil/HEAT or http://www.lincolnmilitary.com
Lodging, DoD-wide website	http://www.dodlodging.net
Mapping Your Trip	http://www.mapquest.com/ or http://www.randmcnally.com/
Marine Corps	http://www.marines.mil
Military One Source (Relocation Info)	http://www.militaryonesource.mil
Military Living (Publications)	http://www.militaryliving.com
Navy (General Information)	http://www.navy.mil
Navy Civilian Jobs	http://www.donhr.navy.mil or http://www.usajobs.gov
Navy Lodge	http://www.navy-lodge.com
Navy Marine Corps Relief Society	http://www.nmcrs.org
NAS Pax River Facebook Page	http://www.facebook.com/NASPaxRiver
Pay Rates, Per diem, BAH, Information	http://www.defensetravel.dod.mil/perdiem/bah.html
Pet Lodging Information	http://www.petswelcome.com
Real Estate	http://www.realestatebook.com
Shipping Your POV/Personal Property	http://www.move.mil
TRICARE	https://www.tricareonline.com
Local Community Information	
Calvert County	http://www.co.cal.md.us
Calvert County Chamber of Commerce	http://www.calvertchamber.org
Calvert County Public Schools	http://www.calvertnet.k12.md.us
Charles County	http://www.charlescounty.com
Charles County Chamber of Commerce	http://www.charlescountychamber.org
Charles Co. Public Schools	http://www.ccboe.com
Maryland State Information	http://www.visitmaryland.org
Sex Offender Registry Website	http://www.nsopw.gov/
Southern Maryland Online	http://www.somd.com
Southern Maryland Realtors	http://www.somdrealtors.com
Southern Maryland Tri-County Counsel	http://www.tccsmd.org
St. Mary's County	http://www.co.saint-marys.md.us
St. Mary's County Chamber of Commerce	http://www.smcchamber.com
St. Mary's Co. Public School	http://www.smcps.org
NAS Patuxent River Information	
NAS Patuxent River	http://www.cnic.navy.mil/Patuxent/index.htm
Pax River Facebook Page	https://www.facebook.com/NASPaxRiver
Human Resources On Line	http://www.navair.navy.mil/jobs/
Military One Source Installations/Pax River	http://www.militaryonesource.mil/ - Select Installations - Patuxent
Navy Health Clinic Pax River	http://www.med.navy.mil/sites/paxriver/Pages/index.html

Please contact the Family Support Center is you have any questions about these websites – 301-342-4911.

Military One Source



(MILITARY INSTALLATIONS & PLAN MY MOVE INFORMATION)

Military One Source is a website for information about your new base and the community that surrounds it. Topics covered include general location information, education, employment, housing, household goods, health and wellness, and family issues.

<http://www.militaryonesource.mil>

Visit this internet site or your local Fleet and Family Support Center for more information.

WELCOME TO PAX

A Class That Is a Must!

Call the Fleet & Family Support Center at 301-342-4911 for reservations.

First Wednesday of Summer months.

This Fleet and Family Support Center program is the best event you can plan to attend. A class jam-packed with information about the base and surrounding communities is offered the 1st Wednesday of every Summer month. Included in the class is a behind-the-scenes tour of NAS, terrific handouts, and loads of useful information about what to do and where to go while living in Southern Maryland. Along with this, information on area history, inhabitants and folklore will be provided.

NAVY GATEWAY INNS & SUITES

Rates as of 01/01/15 \$58.00/night singles, \$68.00/night suites. VIP Suites \$78.00/Night. Reserve @ 301-342-3601.



YOUR NAVY SPONSOR



Your sponsor (per OPNAVINST 1740.3C) is one of the most significant resources for assistance prior to and during your move. He/she provides information concerning your new command and community, helps with travel plans, assists with lodging arrangements, plus much more. Once you arrive at your duty station, the sponsor will continue to offer assistance to you and your family.

At NAS Patuxent River, we are very proud of our sponsor program. If you have confirmation that you are moving here, allow about 15 days for your sponsor to contact you by letter, e-mail or phone. If this time has expired or you need a more timely response, please contact the Fleet and Family Support Center, DSN 342-4911, Commercial 301-342-4911, FAX 301-342-4802 Welcome Aboard!

***Relocation Assistance Program, NAS Patuxent River, MD
DSN 757-1869 or 301-757-1869***

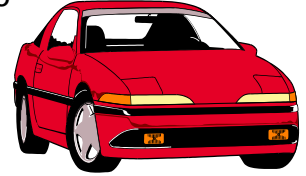
DIRECTIONS & TRANSPORTATION

to Pax River, MD

DIRECTIONS

When driving to Naval Air Station, Patuxent River, take MD 234 South, MD 4 South or MD 5 South off of U.S. Highway 301. MD 4 and MD 5 also exit off of I-95 (the Beltway).

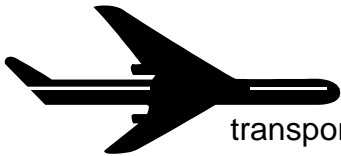
- **MD 234 South** will merge onto MD 5 South. Make a left turn onto MD 246 (Great Mills Road). The base's Gate 2 will be approximately 4 miles ahead. For Gate 1, turn left onto MD 235 North and follow signs.
- **From MD 4 South**. Cross the Thomas Johnson Bridge. At the stoplight, turn left onto MD 235 South. The base will be approximately 5 miles down on the left. Follow signs for Gate 1 or 2.
- **From MD 5 South**. MD 5 South becomes MD 235 near Charlotte Hall (20 miles south of Waldorf). Continue straight on MD 235. The base is approximately 10 miles south on the left. Follow signs for Gate 1 or 2.
- **For check in**. If entering Gate 2, proceed straight on Cedar Point Road to second traffic light. Building 409 is on the right at the corner. The Command Duty Office and Personnel Support Detachment are located there. If you enter at Gate 1, continue straight to the third traffic light and turn left onto Cedar Point Road. Building 409 is located on the right at the next traffic light.



**ALL MAJOR AIRPORTS ARE OVER AN HOUR AWAY FROM OUR BASE.
THERE IS NO PUBLIC TRANSPORTATION TO THE PATUXENT RIVER AREA FROM THE
AIRPORTS. TAXI FARES ARE GENERALLY NOT REIMBURSABLE.**

If you want your command/sponsor to meet you at an area airport (BWI, Dulles, or Ronald Reagan National) make those arrangements prior to your transfer! Due to budget restrictions, there is no longer any free base transportation service to NAS Patuxent River!

**YOU MUST HAVE IT STATED IN YOUR ORDERS TO BE REIMBURSED FOR
COMMERCIAL TRANSPORTATION TO THE BASE!**



NOTE: Check (<http://www.militaryonesource.mil/>) for other transportation options. If you are still in need of assistance, please call your sponsor, command or the Fleet and Family Support Center at (301) 342-4911.

Once you are in our area, St. Mary's Transit System runs a circular route from Leonardtown to the Lexington Park area with extended routes to Charlotte Hall and connections to Charles County and Calvert County transportation systems. There are community taxi services. The base taxi service provides transportation for official business and transportation to area car rental agencies. The SMS Transportation System website is <http://www.stmarysmd.com/dpw>

Internet link to base maps, happenings, and Inbound Sailor POCs:
https://cnic.navy.mil/regions/ndw/installations/nas_patuxent_river.html

TRICARE & THE NAVAL HEALTH CLINIC

Enrollment is not automatic!

Active Duty and Family Members **MUST** be enrolled in this region to receive care. Upon arrival at NAS Pax, please call 1-877-TRICARE, or visit www.tricare.mil, www.hnfs.com or <https://www.dmdc.osd.mil/appj/bwe/indexAction.do> to enroll in TRICARE. Once enrolled, you should go to the medical records department and get registered into the system here so you can call and book appointments.

Enrolling in TRICARE Prime guarantees access to military health care and it costs nothing to enroll if your sponsor is active duty. Enrollment in Prime is optional for each family member; information about other options is available from the TRICARE on line website. The active-duty member is also responsible for ensuring that all sponsor and family member information is updated in DEERS.

www.relayhealth.com is a secure way for patients to communicate with their provider or providers nurse. Patients can ask for referrals, med refills or general questions on this site. For questions, information about enrollment call: 301-342-2761 or the 1-877-TRICARE (874-2273) toll free number.

Please note we have a Naval Health Clinic on base which provides primary care. All urgent, emergency, and inpatient care is provided at local civilian facilities or at military medical treatment facilities within the National Capital Region (NCR).

Pax River Naval Health Clinic services: Exceptional Family Member Program, Military/Aviation Medicine, Family Medicine, Pediatrics, Immunizations, Optometry, Physical Therapy, Mental Health, Preventive & Occupational Medicine, Case Management & Social Work, Pharmacy, Laboratory, Health Promotions, Radiology, Substance Abuse Rehab Program (SARP), Dental (active-duty only), and visiting specialty clinics (ex. ENT, Neurology, etc).

Important phone numbers:

Clinic Quarterdeck/Info desk:	(301) 342-1418
Clinic appointments:	(301) 342-1506
Customer Relations Office:	(301) 995-4980
Nurse Advice Line (24/7)	1-800-TRI-CARE (874-2273) Opt. #1

For more information about clinic hours, services, appointments, updating DEERS etc., visit the NAS Patuxent River Health Clinic website:

<http://www.med.navy.mil/sites/paxriver/Pages/index.html>

STATION REGULATIONS

ABBREVIATED

INDIVIDUAL DRIVERS: Have available on demand, proof of ownership, or written permission to operate the vehicle, a valid state driver's license, and military identification card or base pass. By Executive Order, non-hands free cell phone use while operating a motor vehicle is strictly prohibited on the installation.

ACCIDENTS: Report immediately all motor vehicle accidents occurring on station to the Police Dispatcher at 911 (emergency) or 342-3208/3218 (non-emergency).

SPEED LIMITS: The maximum speed limit on the Naval Air Station, unless otherwise posted, is 35 m.p.h. Most housing areas have a speed limit of 15 m.p.h. and 5 m.p.h. is allowed in all parking lots. Personnel vans and gasoline tank trucks shall not exceed 25 m.p.h. The speed limits shall not be construed to authorize operations of any vehicle at speed faster than consistent with existing road, weather, and traffic conditions. Intersections, roads or taxiways shall not be blocked at any time. Clear passage must be maintained at all times for emergency vehicles and taxiing aircraft. Vehicles shall not be driven on runways or taxiway unless under direct control of the operations control tower.

PARKING: Parking is permitted in parking lots, assigned parking spaces and other clearly marked vehicle parking spaces. The Director, Department of Public Safety and/or Chief of Police are authorized to move those vehicles that present traffic, fire, or other safety hazards.

REGISTRATION REQUIREMENTS: NAVADMIN 146/13 promulgates Navy policy eliminating the requirement for vehicle decals for base access, effective 1 July 2013. Access to property and installations shall be accomplished by vetting Personal Identity Information to determine the eligibility of an individual requesting and requiring access to Department of Defense Facilities, thereby eliminating the decal requirement for access. Vehicles on a Navy installation must be licensed, registered, inspected, and insured in accordance with state and local laws. Rental vehicles are considered privately-owned vehicles for purposes of base entry and access control. The vehicle rental contract will suffice as proper licensing, registration, and proof of insurance for base access.

For more information please see NAVADMIN 146/13.

RADAR: Speed limits aboard NAS are checked by stationary and mobile radars. Radar detectors are prohibited from use on the installation.

CELL PHONES: All Maryland drivers are prohibited from using a cell phone without a hands free device while operating a motor vehicle in motion. Cell phone usage is a primary violation and drivers will be stopped and cited. Exceptions are allowed for calls placed to 9-1-1, ambulance, hospital, fire, or law enforcement agencies, as are calls made by emergency and law enforcement personnel. Maryland also prohibits texting while driving. This law prohibits an individual from writing or sending a text message while operating a motor vehicle that is in motion or in the travel portion of the highway. This law does not apply to texting 9-1-1 or using a global positioning system. *The same applies on ALL federal installations.*

ON-BASE FISHING, HUNTING AND CRABBING: A state license and base permit are required.

NOTE: All on base emergencies: Police, Fire, and Ambulance calls may be made by dialing 911.

Personal Property Office

From Cedar Point Road, turn left on to Millstone Road.

Proceed .9 miles and bear left. Building 588 will be the first building on the left. The PPO is located on the first floor/Room 109.

Hours Monday-Thursday 0830-1430 & Wednesday 0930-1430.

Send email to paxriverhhg_mailbox@navy.mil .

Main Number: (301) 757-9666 or

(888) 271-7950

• **Quality Control (301) 757-9666**

• **Public Scales (301) 862-3311 or**

(301) 475-2939

Due to staffing shortage, service is provided by appointment only. PLEASE call or email to make an appointment.

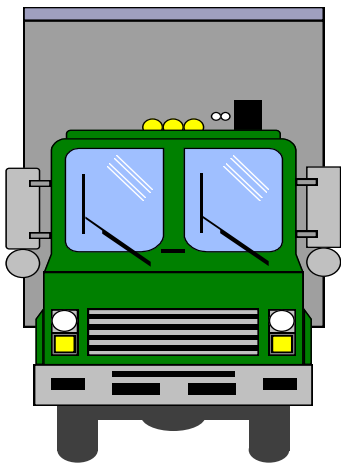
Household Goods

For Information - <http://www.move.mil>

Household Goods Help Line – (800) 444-7789

24/7/365 DPS Helpline 1-(800) 462-2176 (option 6)

Email: householdgoods@navy.mil 1-855-HHG-MOVE



Child Development Program
22027 Cuddihy Road - Building 2813
NAS Patuxent River, MD 20670
(301) 342-8988 & (301) 342-3636
Hours: 6:00 a.m. to 6:00 p.m.

Child Care Placement Resource & Referral
(301) 342-3960 or Fax (301) 342-0930

Child Development Program: <https://qol.navyaims.net/CYPWeb>

- Childcare services for children, ages 6 weeks to 5 years
- Child Placement Office
- National Association for the Education of Young Children Accreditation
- Active duty military have first priority
- Rates based on total family income

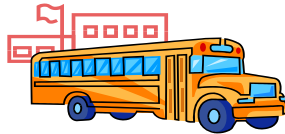
Child Development Homes:

- Certified providers located in government housing
- Background checks on providers and family members
- Monthly inspections are unannounced
- Monthly training
- Advanced training to maintain certification
- 6 weeks to 12 years of age
- Active duty and Department of Defense (DoD) employees accepted
- Subsidy to fees for active duty
- Child Placement Office
- Hourly care by reservations only

Youth Activities:

- School Age Care Program (Before and After School Care)
- Before and After School Care for full day kindergarten program
- Mattapany Day Camp (summer camp for ages kindergarten to 12 years)
- Teen programs
- Open scheduled recreation
- Special events for young children, ages 6 – 12 years
- Leaders in Training (summer months, ages 12 – 15 years)
- Traveling Playground (summer months, base housing)
- Boys and Girls Clubs
- 4-H Affiliate
- Work Wise Program (CNIC Grant for ages 15 – 18 Years)

SCHOOLS



One of the biggest challenges families face during the PCS cycle is determining the best schools for their children. The Navy employs School Liaison Officers (SLOs) at each installation to aid families with their educational concerns. SLOs provide information and resources to assist parents with school options, enrollment and graduation requirements, special education navigation, homeschooling, and post-secondary preparation (test prep and scholarships). Below is a general overview of school information for families stationed at NAS Patuxent River. For additional information and assistance, parents are encouraged to contact Dawn Simpson, the School Liaison Officer, at 301-757-1871 or dawn.simpson@navy.mil

Maryland State Department of Education (www.marylandpublicschools.org/MSDE)

Kindergarten Enrollment: Code of Maryland Annotated Regulations (COMAR 13A.08.01.01B) requires that a child who resides in Maryland must attend a public or nonpublic kindergarten program the school year before entering the first grade. Children entering Kindergarten must be five (5) years old on or before Sept 1 of the year they are enrolling.

Pre-K Enrollment: Pre-k is a state-funded program for four-year-old children who are from economically disadvantaged or homeless families. After the initial enrollment of these children, local school systems may fill any remaining vacancies based on locally established criteria.

Curriculum: Maryland has adopted the Common Core State Standards (CCSS) and utilizes the PARCC (Partnership for Assessment of Readiness for College and Careers) assessments to monitor college and career readiness. PARCC exams are administered in grades 3-8, plus high school English and Algebra courses.

Maryland Graduation Requirements

Requirements are posted at http://www.msde.maryland.gov/MSDE/testing/hsg_qa/. In addition to the academic course requirements established by the State, students must also meet attendance, service-learning and any local school system requirements, plus pass the PARCC assessments for English and Algebra and the HSAs tests for Government and Biology. For information on district specific requirements, visit the county's public school system website or contact the School Liaison Officer.

Registering for School

For information on registering for school, parents should contact the school district, visit the school website, and/or contact the School Liaison Officer. Common documents necessary to register a student include: the student's birth certificate, proof of residence, Social Security Number, and a Withdrawal/Transfer form from the previous school. An up-to-date Immunization Record and Health Evaluation Record (physical) will be required if entering Maryland public schools for the first time. If enrolling in a private school, contact the school to find out which documents are necessary.

Schools in the Region

Public

St. Mary's County Public Schools — www.smcps.org or 301-475-5511-- NAS Patuxent River is located in St. Mary's County and most dependents of the base personnel attend these schools.

Schools in the Region – Public (Cont)

Calvert County Public Schools — www.calvertnet.k12.md.us or 410-535-1700--Adjacent to St. Mary's County ("just over the bridge"), some of the dependents of the base personnel attend schools in the southern end of the County.

Charles County Public Schools — www.ccboe.com or 301-934-7221-- Charles County is located approximately 30 miles north of NAS Patuxent River and closer to Washington, D.C.

Private (St. Mary's County) www.somd.com/education/stmarys/private/index.php

Bay Montessori (ages 2-12) 301-737-2421 www.baymontessori.com

Starmaker Learning Center (ages 6 wks-13) 301-863-7740
www.homeworkcenters.com/starmaker/index.html

King's Christian Academy (grades K-12) 301-994-3080 www.kingschristianacademy.org

Leonard Hall Junior Naval Academy (grades 6 -12) 301-475-8029 www.lhjna.org

St. Michael's (grades preK-8) 301-872-4996 www.saint-michaels-school.org

St. John's (grades K-8) 301-373-2142 www.sjshollywood.org

Father Andrew White (grades preK-8) 301-475-9795 www.fatherandrewwhite.org

Mother Catherine Spalding (grades preK-8) 301-884-3165 www.mothercatherine.org

Little Flower Elementary School (grades preK-8) 301-994-0404 www.littleflowercatholic.org

St. Mary's Ryken High School (grades 9-12) 301-475-2814 www.smrhs.org

Private (Calvert County)

Cardinal Hickey Academy (grades K-8) 410-286-0404 www.cardinalhickeyacademy.org

Our Lady Star of the Sea School (grades K-8) 410-326-3535 www.olsss.org

The Calverton School (grades preK-12) 410-535-0216 www.calvertonschool.org

The Tidewater School (grades preK-5) www.thetidewaterschool.org

Preschools - for a complete list of private preschools, contact the School Liaison Officer.

Home school Information

Families choosing to homeschool in Maryland must submit a Homeschooling Notification form to the public school's Department of Student Services and undergo a bi-annual portfolio review with the school system or supervising non-public school/institution. For additional information and other homeschooling resources, contact the School Liaison Officer or visit:

Maryland State Department of Education

http://www.marylandpublicschools.org/MSDE/divisions/studentschoolsvcs/student_services_alt/home_schooling/

Homeschool.com (www.homeschool.com)

Homeschool Central (www.homeschoolcentral.com)

The appearance of a website on this list does not imply official endorsement by the DoD; this list is not intended to be considered all-inclusive -- the information is merely provided as a convenience to our customers.

ADULT EDUCATION & COLLEGE INFORMATION

Call for Current Fees/Tuition/Schedule.

ON BASE:

EMBRY RIDDLE AERONAUTICAL UNIVERSITY – www.erau.edu

\$245-\$290.00(Undergrad) & \$395-\$445.00 per(grad)/sem hour; Distance Learning \$245-\$290.00
(Undergrad) \$445-\$490.00 (Grad)SH
21795 B N. Shangri-La Drive, Lexington Park, BLDG 1489; PHONE: 301-863-8776;
HOURS: 0900 -1700 MONDAY-FRIDAY

FLORIDA INSTITUTE OF TECHNOLOGY – www.fit.edu

\$550.00 (graduate)/semester hour
BLDG 1489; PHONE: 301-862-1004; HOURS: 0830 -1630 MONDAY-FRIDAY

NAVY COLLEGE OFFICE

BLDG 2189, ROOM 145
PHONE: 301-757-4100 FAX: 301-342-2665
HOURS: 0730 -1600 MONDAY-THURSDAY, 0730-1500 FRIDAY

UNIVERSITY OF MARYLAND UNIVERSITY COLLEGE – <http://umuc.edu>

\$250.00 Resident (undergrad) \$459.00 Resident (grad)/semester hour
BLDG 2189; PHONE: 301-737-3228; HOURS: 0830 -1630 TUESDAY & THURSDAY
MON-WEDS-FRI Representatives at Southern Maryland Higher Education Center

OFF BASE:

COLLEGE OF SOUTHERN MARYLAND (3 CAMPUSES) - www.csmd.edu

\$138.99/semester hour
WALDORF & LA PLATA (Charles), LEONARDTOWN (St. Mary's) & PRINCE FREDERICK (Calvert)
PHONE: 301-934-2251 (Waldorf) 240-725-5300 (Leonardtown) 301-934-7790 (Prince Frederick)

ST. MARY'S COLLEGE - <http://smcm.edu/>

\$195.00/semester hour
ST. MARY'S CITY, MD
PHONE: ADMISSIONS/ 240-895-5000 & CONTINUING EDUCATION & PROFESSIONAL PROGRAMS/
240-895-2000
HOURS: 0800-1700 MONDAY-FRIDAY

SOUTHERN MARYLAND HIGHER EDUCATION CENTER – www.smhec.org

CALIFORNIA, MD
PHONE: 301-737-2500 FAX: 301-737-2542
VARIED UNDERGRADUATE & GRADUATE COURSES FROM 14 DIFFERENT COLLEGES &
UNIVERSITIES. TUITION COST VARIES
HOURS: 0800-1700 MONDAY-FRIDAY (0700-2200 If classes in session)
Visit their web site at www.smhec.org

BACHELOR HOUSING ASSIGNMENT POLICIES

Unaccompanied Military Personnel

E1 - E4 -- There are six rooms to a MOD, single occupancy, with a shared head and shared lounge. All lounges have flat screen TVs, 2 sofas, one pub table, 2 bar stools, coffee table, end table and two lamps. Each head is equipped with a washer and a dryer. Each room consists of a full size bed, dresser, wardrobe, computer desk with chair, 2 nightstands, lounge chair with ottoman, 3 lamps, microwave and refrigerator. All rooms are equipped with phone and cable hook ups. Residents desiring cable, phone or internet service in their rooms will be responsible for all costs, services are provided by Metrocast. The complex also has a community kitchen facility that is located in building 1455 and available for use 24 hours a day 7 days a week.

All residents are required to maintain daily living standards and are subject to weekly room inspections. All facilities are located within walking distance of the gym, single sailor center and other MWR facilities.

For additional information, contact the front desk at 301-995-2754. Hours of operation are Monday – Thursday from 0700-1600 EST. and on Friday from 0700-1500 EST.

Single Sailors E-5 and above -- No barracks rooms are available. Please see a Housing Referral Specialist for the many housing options that are available to you; however, Lincoln Military Housing is offering an opportunity which would allow you to reside in a select community as well as reduce your housing expenses. Please call 240-895-0380 for details.

GEOGRAPHICAL BACHELOR POLICY

Geographical Bachelors (GB) must put in a request for GB berthing to be decided by the Geographical Bachelor Board. Note: Geographical Bachelor space is extremely limited.

In accordance with CNIC instruction 5009.5 only 10% of the total permanent party bed spaces can be used to accommodate Geographical Bachelors (GB). A GB is anyone drawing BAH at the dependant rate with orders that allows for the transfer of their dependants. GB's are berthed in a MOD regardless of rank on a space available category and will be displaced per CNIC instruction 5009.5, for personnel of higher priority.

All personnel requesting to reside in Unaccompanied Housing while drawing BAH at the dependant rate will be required to fill out the appropriate paperwork to be placed on the waiting list and any additional paperwork required to be considered for GB status. For additional information on the Geographical Bachelor Officer Program, please contact UH LCPO at 301-757-0666.

Ensure that sponsors are well versed on the Unaccompanied Housing circumstances here at NAS PAX River and that incoming personnel are taking the appropriate steps, in advance, to address their housing concerns.

Contact the Bachelor Housing Manager at 301-995-2754 or DSN 995-2754 for more information.

HOUSING SERVICE CENTER

Patuxent River has 749 private Military Family Housing Units. Waiting times vary throughout the year, so we encourage you to contact the Housing Office for current times and for any questions you may have. Bedroom entitlement and assignment policies are in compliance with CNICINST 5009.5. For additional information, we welcome you to visit the web sites listed below.

Enclosed are the forms needed to process your request to be placed on the housing wait list. All items listed must be included with your submission. Failure to provide all items will delay your placement on the wait list:

1. DD-Form 1746, attached.
2. Current copy of your page 2/Record of Emergency Data (Dependent Information).
3. Copy of your orders to PAX River.
4. Sex Offender Addendum JAG, attached.
5. Courtesy Move Entitlement, attached.
6. Housing Applicant Statement of Understanding, attached.
7. Copy of detaching endorsement/loss UIC statement, or copy of stamped orders reflecting detaching date.

You will be placed on the wait list according to your detachment date. Please provide a **COMPLETE** date (00/00/0000) in block 14(d) on the 1746. Your control date may need to be adjusted to reflect your official date of detachment, if different than originally provided. Once placed on the wait list, your application will be referred to our PPV Partner (Lincoln Military Housing). You can contact them at (240) 895-0380. Please ensure we have valid contact numbers for you as well.

If you desire to review non-PPV housing options, please visit the Southern Maryland housing classified ads located at www.homes.mil, www.militarybyowner.com or www.somd.com for local area information. If you need any additional information, feel free to contact us at the numbers listed below.

Website: <http://www.cnic.navy.mil/patuxent> / <http://www.lincolnmilitary.com> / www.cnic.navy.mil/HEAT

Family Housing: (301) 342-3846; DSN 342-3846	Lincoln Mil Hsg Privatized Housing
Fax: (240) 895-0385	Phone: (240) 895-0380
Hours: Monday – Friday 0730 – 1630	Fax: (240) 895-0385
Information Foyer – available 24 hrs daily	

Address: 21967 Cuddihy Road
Attn: Housing Service Center
Building 2371
Patuxent River MD 20670-1122

APPLICATION FOR ASSIGNMENT TO HOUSING <small>(Before completing form, read Privacy Act Statement and Instructions on reverse)</small>				1. TYPE SERVICE DESIRED <i>(X one or both)</i>	
				a. MILITARY HOUSING	b. HOUSING REFERRAL
SECTION I - APPLICANT INFORMATION					
2. NAME OF SPONSOR <i>(Last, First, Middle Initial)</i>		3. PAY GRADE	4. SSN	5. DOD COMPONENT	
6. ADDRESS <i>(Street, City, State, Zip Code)</i>		7. TELEPHONE NUMBER		8. STATUS OF APPLICANT <i>(X one)</i>	
		a. HOME <i>(Area Code)</i>	b. DUTY <i>(DSN)</i>	a. MILITARY MEMBER	c. CIVILIAN
		9. MARITAL STATUS		b. MILITARY SPOUSE	d. FOREIGN NATIONAL
11. I REQUEST HOUSING FOR <i>(X one)</i>		10. I AM SEPARATED FROM MY DEPENDENTS <i>(X one)</i>			
a. SELF ONLY	b. SELF AND DEPENDENTS			a. VOLUNTARILY	b. INVOLUNTARILY
12. INSTALLATION/ORGANIZATION TRANSFERRED FROM		SECTION II - MILITARY CAREER INFORMATION <i>(Citizens ship to item 15.)</i>			
13. INSTALLATION/ORGANIZATION TRANSFERRED TO		14. DATES <i>(Enter in YYYYMMDD order)</i>		MILITARY APPLICANT	MILITARY SPOUSE
		a. EFFECTIVE RANK/RATE DATE			
		b. ACTIVE DUTY SERVICE COMPUTATION			
		c. TIME REMAINING ON ACTIVE DUTY			
		d. EFFECTIVE CHANGE IN DUTY STATION			
		e. REPORT DATE			
		f. ESTIMATED FAMILY ARRIVAL DATE			
SECTION III - DEPENDENT DATA					
15. DEPENDENTS RESIDING WITH ME <i>(If more space is needed, continue on plain paper.)</i>					
a. NAME <i>(Last, First, Middle Initial)</i>	b. DATE OF BIRTH <i>(YYYYMMDD)</i>	c. SEX	d. RELATIONSHIP	e. REMARKS <i>(Handicap, health problems, expected additions to family, etc.)</i>	
SECTION IV - HOUSING DATA					
16. COMMUNITY HOUSING DESIRED <i>(X as applicable)</i>					
a. PURCHASE HOUSE	d. RENT HOUSE	g. RENT MOBILE HOME SPACE	j. ROOM AND BOARD		
b. PURCHASE CONDOMINIUM	e. RENT APARTMENT	h. SHARE	k. SUBLET		
c. PURCHASE MOBILE HOME	f. RENT MOBILE HOME	l. RENT ROOM	l. TRANSIENT		
17. AMENITIES DESIRED <i>(X as applicable. Write number in d. and e.)</i>		18. DATE HOUSING NEEDED <i>(YYYYMMDD)</i>		19. PRICE RANGE <i>(Community Housing)</i>	
a. FURNISHED	e. NO. BATHS				
b. UNFURNISHED	f. PETS <i>(Allowed)</i>				
c. AIR CONDITIONING	g. OTHER <i>(Explain)</i>	20. LOCATION PREFERENCE <i>(Community Housing)</i>			
d. NO. BEDROOMS					
21. REMARKS					
22. SIGNATURE OF APPLICANT				23. DATE SUBMITTED <i>(YYYYMMDD)</i>	
SECTION V - DISPOSITION <i>(To be completed by the Housing Office.)</i>					
24. MILITARY HOUSING					
a. APPLICATION RECEIVED <i>(YYYYMMDD and time)</i>	b. APPLICATION EFFECTIVE <i>(YYYYMMDD)</i>	c. DD FORM 1747 PROVIDED <i>(YYYYMMDD)</i>	d. HOUSING AVAILABILITY <i>(Boxes indicated on DD Form 1747)</i>		
e. APPLICANT PLACED ON WAITING LIST	f. EFFECTIVE PLACEMENT <i>(YYYYMMDD)</i>	g. BEDROOMS REQUIRED	h. DATE UNIT ASSIGNED <i>(YYYYMMDD)</i>		
SECTION VI - HOUSING REFERRAL CERTIFICATE					
On this date I have received a listing of the housing restrictions approved by the Installation Commander, and I will not reside in any property on the restricted list. I have been briefed on (1) the services provided by the Housing Office, (2) the DoD program on equal opportunity for military personnel in off-base housing, and (3) nondiscrimination based on physical or mental handicaps.			In addition, if any facility refuses to rent or sell to me or I have reason to believe I am being discriminated against, I will promptly notify the Housing Office.		
25. SIGNATURE OF APPLICANT			26. DATE SIGNED <i>(YYYYMMDD)</i>		

COURTESY MOVE (HOUSEHOLD GOODS) ENTITLEMENT

Based on Commander, Navy Installations Command (CNIC) policy to qualify for a courtesy move you must meet the following:

Eligibility

- Member **is eligible** for a courtesy move when member receives PCS orders and applies for PPV housing within 30 days of reporting to his/her command in the Patuxent River area and PPV housing is not available.
- Member **not eligible (bachelor)** for PPV housing when PCS to Patuxent River area but becomes eligible due to change from **member with no dependents** to **member with dependents** member must apply for PPV housing within 30 days of change of status to be eligible for courtesy move.

Forfeits Eligibility

- Member fails to apply for PPV housing within 30 days of report date to command on PCS orders to Patuxent River area.
- Member fails to apply for PPV housing within 30 days of becoming eligible (i.e. marriage/pregnancy.)
- Member is referred to Lincoln Military Housing for housing and is offered a PPV home and turns down the home.

This is to certify that I have been briefed and understand the above. I understand I am responsible for moving expense if I am entitled to a courtesy move and when eligibility has been forfeited.

(Printed Name and Sign)

(Date)

OFFICE USE ONLY

(Report Date)

(Date of Application)

SEX OFFENDER POLICY ACKNOWLEDGEMENT & DISCLOSURE

PRIVACY ACT STATEMENT

Authority: 10 U.S.C 5013; 10 U.S.C 5041, 10 U.S.C 2831, DoD 4165.63-M, and E.O. 9397 (SSN)

Principle Purposes: To determine an individual's eligibility for Navy housing; including privatized housing.

Routine Uses: Used by region and installation housing office personnel to determine eligibility for Navy housing; and by private partners who operate privatized Navy housing for management and operational purposes.

Disclosure: Voluntary; however, failure to provide the requested information may impact eligibility for Navy housing, including privatized housing.

POLICY STATEMENT: In accordance with OPNAVINST 1752.3 and CNICINST 5009.5, to the maximum extent permitted by law or otherwise waived by Commander, Navy Installations Command or the Chief of Naval Personnel (CNP), sex offenders are to be identified & prohibited from accessing Navy facilities and occupying Navy owned, leased, or PPV housing.

Sex Offender Definition: Any person having convicted of a criminal offense requiring registration per the National Guidelines for Sex Offender Registration and Notification Act (SORNA) (42 U.S.C. 16901-16962)

NOTICE OF REQUIREMENT TO DISCLOSE

	INITIAL
1. Military sponsors requesting assignment to Navy owned, leased or privatized housing are required to sign this acknowledgment and disclosure form.	
2. Occupancy of Navy owned, leased or privatized housing will not be approved for otherwise eligible applicants if the applicant, any authorized dependent, or live-in aide, residing in the home is a sex offender.	
3. Anyone discovered to be a sex offender in the application process shall be denied access to Navy owned, leased or privatized housing.	
4. Anyone found to be a sex offender after taking occupancy may lose the privilege of residing in Navy owned, leased or privatized housing, may be barred from the installation, and/or may be evicted, and may be required to pay all relocation expenses unless prohibited by law or otherwise waived by competent authority.	
5. The Installation or Region Housing Program Director will immediately forward information regarding identified sex offenders to the Installation N3, N9 and supporting OGC/FJA offices, to include a copy of the applicant's DD 1748 and this form. All information will be forwarded to CNIC within two working days.	
6. Anyone found to have falsely certified this Acknowledgment shall be referred for barment or eviction, as appropriate, and may be responsible for relocation expenses.	
7. Denial of an application for assignment to Navy owned, leased or privatized housing under the applicable policy, may be appealed to the Secretary of the Navy, via the military sponsor's chain of command.	

CERTIFICATION: I have read and understand the above policy. By my signature below, I certify that under a penalty of administrative action and/or prosecution for making a false official statement in violation of 18 U.S.C 1001 and/or Uniform Code of Military Justice, Article 107, that neither I nor any person living in my household is a registered/convicted sex offender. I understand that I am required to notify the Navy's Housing Office and the Installation Security Office immediately if circumstances change so that this certification is no longer true.

Signature

Date

Print Name

Command

HOUSING APPLICANT STATEMENT OF UNDERSTANDING

____ I understand waiting times for Public Private Venture Housing (PPV) are only estimates and subject to change.

____ I understand that I will be placed on a wait list and I will be offered first available unit based on my entitlement; there are no promises or guarantees on which PPV housing area I will be offered.

____ I understand that if I decline my first offer of PPV housing, I will be made a second offer, but if I decline the second offer, I will be placed at the bottom of the wait list with a control date effective the day following the date I declined my second offer.

____ I am required to keep the Housing Office advised of any changes to my application (**i.e. lease or Rental Partnership Program (RPP) expiration, rate, family members, phone numbers, e-mail addresses, etc.**). I am required to provide housing with advance notice that I am unable to accept PPV housing until a specific date.

____ I understand that a maximum of two (2) **pets (dogs and/or cats)** are permitted. Pet quantities exclude birds and fish. I understand any damages caused to the unit or grounds by my pet(s) are also my responsibility. Barnyard or exotic pets (**reptiles, ducks, rabbits, chickens, ferrets, etc.**) are **NOT ALLOWED**.

____ I understand, if I am in a RPP lease, I will not be offered PPV housing unless I have completed my first lease term, and provided the housing counselor with a copy of my **second term month-to-month RPP lease**.

____ I understand, prior to signing for PPV housing, I will be required to provide proof from my landlord that I have given a proper vacate notice. If living in an RPP unit, I am required to provide from the landlord proof of proper vacate notice and proof that all required termination fees have been paid.

____ I understand that I will not be eligible to reapply for larger quarters if I accept smaller quarters than those to which I am entitled unless my current family composition changes.

____ I understand that I must have six months or more remaining on my tour of duty to be assigned PPV housing.

____ I understand that assignment to PPV housing will be accepted in writing. **Acceptance may be made by sponsor or sponsor's designee with a Special Power of Attorney (must state "start, stop, and change allotment")**.

____ I understand that when offered housing; **I have 24 hours to accept or decline**.

____ I am aware that the **Privacy Act of 1974** prohibits release of personal information without my approval. I do hereby authorize the Military Housing Office to release the information contained in this family housing application to the Public Private Venture Partner for the purpose of placement on the family housing waiting list and placement in a public private venture home.

____ I am aware of the Department of Navy's implementation of the **Resident Energy Conservation Program (RECP)** and that I am required to pay all electric consumption costs above the 10% buffer zone allowed for my house based on comparison of other homes in my neighborhood of similar size, age, bedroom count and energy efficiency (known as Like Type Groups). Waiver/exemption request forms from the Resident Energy Conservation Program for medical purposes may be obtained at the housing office.

BASIC ALLOWANCE FOR HOUSING (BAH)*(AS OF JANUARY 2015)***NAS, PAX RIVER**

PAY GRADE	BAH w/ DEPENDENTS	BAH w/o DEPENDENTS
E-1	\$1551	\$1224
E-2	1551	1224
E-3	1551	1224
E-4	1551	1224
E-5	1662	1368
E-6	2031	1524
E-7	2073	1557
E-8	2121	1734
E-9	2211	1851
W-1	2034	1527
W-2	2094	1731
W-3	2151	1860
W-4	2235	2043
W-5	2337	2085
01E	2082	1662
02E	2142	1824
03E	2250	2031
O-1	1701	1437
O-2	2025	1623
O-3	2148	1899
O-4	2376	2079
O-5	2538	2106
O-6	2562	2148
O-7+	2589	2193

NAS Chapel Welcomes You

Worship

Catholic

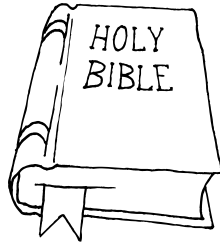
Sunday Mass – 09:00 & 17:00

Daily Mass - M-TH. 1135 (Friday mass for Holy Day of Obligation.)

Protestant

Sunday

Worship, 11:00



Free childcare is provided for Sunday services.

Confidential pastoral counseling, including premarital and marital, is always available.

Please call for an appointment.



Chaplains also perform weddings and baptisms according to the traditions of their respective churches.

Call us for details.

Religious Education

Protestant Sunday School, Sunday at 0930.

Age-graded classes - 4 year olds to adult.



Protestant Children's Church & Children's Choir are offered each week during the Worship hour.

Catholic CCD,
Sundays 10:30 – 11:30
Ages 3 - Adult



Bible Study

In addition to Sunday School and CCD, we offer the following at the Religious Program Center:

Sunday	18:00, Soup/Salad/Scripture
Tuesday	18:30, Ladies Bible Study (LBS)
Thursday	10:00 – 11:30 LBS

Please call for details and locations.

Rev. 05/22/2014



Welcome to the Naval Air Station Patuxent River! Located at the mouth of the Patuxent River and the majestic Chesapeake Bay, the station sits on approximately 6,400 historic acres. It is one of the most beautiful and vital shore installations in existence today.

Morale, Welfare and Recreation (MWR) oversees twenty-two facilities and numerous picnic areas, playgrounds, athletic fields and campgrounds. Dedicated to providing recreational opportunities to base personnel, their families and other eligible patrons, MWR is always looking to improve and expand its program and facilities offerings. Please check out our website for further detail on all MWR facilities. Visit us at:

<https://cnic.navy.mil/Patuxent/FleetAndFamilyReadiness/ThingsToDo/index.htm>

MWR FACILITIES AND PROGRAMS

- | | |
|---------------------------|------------------------------------|
| ★ Drill Hall | ★ Cedar Point Golf Course |
| Cross-trainers | ★ West Basin Marina |
| Indoor Swimming Pool | ★ Navy Flying Club |
| Exercise bikes | ★ Auto Skills Center |
| Volleyball | Party Rentals |
| Basketball | ★ Beach |
| Weight Room | ★ Beach House |
| Racquet Ball | ★ Campgrounds |
| Fitness and Sports Office | ★ Movie Theater |
| ★ Aquatics | ★ Liberty Center |
| Indoor and Outdoor Pools | Child Development Programs |
| ★ Bowling | Child Development Center |
| Intramural | Child Development Annex |
| Leagues | Child Development Homes |
| Cosmic Bowling | ★ Customized Creations |
| ★ Energy Zone | ★ Information, Ticket & Tours |
| Group Exercise | ★ Dining |
| Dance Classes | ★ Eddies |
| Yoga | River's Edge Catering & Conference |
| Belly Dancing | |

FAMILY EMPLOYMENT READINESS PROGRAM

If you are a spouse or working-age family member of an active duty or retired military member accompanying your sponsor to NAS Patuxent River, then the Family Employment Readiness Program (FERP) can assist you with your employment needs. Services include resume and cover letter development, practice job interviews, career development seminars and up-to-date information about employment resources available in Southern Maryland.

Date: _____

Name: _____

Address: _____

Phone number: _____ E-mail: _____

Sponsor's name: _____

Present duty station: _____

Departure date / Arrival date to Pax River: _____

Employment desired: _____

Full time or part time: _____

Former civil service employee? _____ If yes, highest grade held? _____

Job experience/skills:

Education: _____

Salary range: _____ Child Care Needed: Yes _____ No _____

Please mail or fax this completed form with a copy of resume, if available, to:
Family Employment Readiness Program Manager, Fleet and Family Support Center, 21993 Bundy
Road, Building 2090, Naval Air Station, Patuxent River, MD 20670-1132.
301-342-4802 FAX

JOB INFORMATION FLYER

Job search information is mostly automated. The links below will connect you to the latest job listings and points of contact mostly in the local area.

1. Job Vacancies on Patuxent River NAS:

Federal jobs at PAX RIVER: <http://www.usajobs.gov>

Dept of the NAVY CIVILIAN JOBS;
<http://www.secnave.navy.mil/donhr/Pages/Default.aspx>

NAVAIR Jobs; (For entry level scientist, engineering, & business positions, plus summer and co-op employment.) <http://www.navair.navy.mil/jobs/>

DON Acquisition Intern Program; <http://www.navsea.navy.mil/NAVSEAJobs.aspx>

MWR Jobs; <http://navymwr.org/jobs>

Navy Exchange Jobs: <http://www.mynavyexchange.com/nex/work-for-us>

Pax River Non-Appropriated Funds Vacancies:
http://www.cnic.navy.mil/content/cnic/cnic_hq/regions/ndw/about/jobs.html

2. Local Area Job Vacancies:

Maryland Workforce Exchange: <http://www.dllr.state.md.us/county/>

Southern Maryland Online: <http://somd.com/employ/>

St Mary's County Jobs: <http://www.co.saint-marys.md.us/jobs.asp>

Charles County Jobs: <http://www.charlescountymd.gov/employment-page>

Calvert County Jobs: <http://www.co.cal.md.us/index.aspx?NID=534>

3. Other

Child Care and Nanny Jobs; <http://www.care.com>

St. Mary's County Technology Handbook (available at FFSC); <http://www.co.saint-marys.md.us/decd/handbook/>

Snag A job: <http://www.snagajob.com>

A variety of jobs nationwide: <http://www.indeed.com>

**The Fleet and Family Support Center
21993 Bundy Road
Building 2090
Patuxent River, MD 20670-1132
Relocation Assistance Program
(301) 342-4911**